



NORO

MAGAZINE

Jacintha



27 Jacintha

●●○○ EASY



Size

Sized for Small/1X.

Finished Measurements

- Bust 51 in/130cm.
- Length 22 in/56cm.

Materials

- 2 x 200g balls of Noro *Geshi* in #29.
- One pair size US 5/3.75mm needles.
- One pair size US 6/4mm needles or size to obtain gauge.
- Clip-on stitch markers.
- Stitch holder.

Gauge

21 sts and 26 rows = 4 in/10cm over chevron chart patt using larger needles.

TAKE TIME TO CHECK GAUGE.

General and Knitting Abbreviations

approx approximately; **beg** begin(ning); **CC** contrasting color; **cm** centimeter(s); **cn** cable needle; **cont** continue(ing); **dec** decrease(ing); **dpn** double-pointed needle(s); **est** established; **fall** follow(s) (ing); **g** gram(s); **in** inch(es); **inc** increase(ing); **k** knit; **kfb** knit into front and back of stitch; **LH** left-hand; **mm** millimeter(s); **MC** main color; **M1** make one (see glossary); **p** purl; **patt(s)** pattern(s) (ed); **RH** right-hand; **rnd(s)** round(s); **RS** right side; **SKP** slip 1, knit 1, pass slip stitch over; **SK2P** slip 1, knit 2 stitches together, pass slip stitch over k2tog; **S2KP** slip 2 stitches together knitwise, knit 1, pass slip stitches over knit 1; **sl** slip; **sm** slip marker; **ssk/ssp** slip, slip, knit/purl (see glossary); **st(s)** stitch(es); **St st** Stockinette stitch; **tbl** through back loop; **tog** together; **WS** wrong side(s); **wyib** with yarn in back; **wyif** with yarn in front; **yo** yarn over (hook or needle); * repeat directions following * as many times as indicated; [] repeat directions inside brackets as many times as indicated.

Glossary

bind off To finish off an edge and keep stitches from unraveling by lifting the first stitch over the second, the second over the third, etc. (UK: cast off).

bind off in ribbing Maintain the rib pattern as you bind off (knit the knit stitches; purl the purl stitches) (UK: cast off in ribbing)

cast on Form a foundation row by making specified number of loops on the knitting needle.

decrease Reduce the number of stitches in a row (i.e., knit 2 together; purl 2 together).

increase Add to the number of stitches in a row (i.e., knit in front and back of stitch).

knitwise Insert the needle into the stitch as if you were going to knit it.

make one Insert tip of LH needle from front to back under the strand between the last stitch worked and the next stitch on the needle. Knit into the back loop to increase one stitch.

make one purl stitch With the needle tip, lift the strand between the last stitch worked and the next stitch on left-hand needle and purl it. One purl stitch has been added.

no stitch On some charts, “no stitch” is indicated with shaded spaces where stitches have been decreased or not yet made. In such cases, work the stitches of the chart, skipping over the “no stitch” spaces.

place markers Loop a piece of contrasting yarn or a purchased stitch marker onto the needle.

pick up and knit/purl Knit (or purl) into the loops along an edge.

purlwise Insert the needle into the stitch as if you were going to purl it.

selvage stitch Edge stitch that helps make seaming easier.

skip Skip specified number of stitches of the previous row and work into next stitch (UK: miss).

slip, slip, knit/purl Slip next two sts knitwise (purlwise), one at a time, to right-hand needle. Insert tip of left-hand needle into fronts of these sts from left to right and knit/purl them together to decrease one stitch.

slip stitch In knitting, pass a stitch from the left-hand to the right-hand needle as if to purl without working it. In crochet, insert hook through loop or edge, yarn over and pull through loop on hook (UK: ss or sc).

work even Continue in specified pattern without increasing or decreasing (UK: work straight).

yarn over In knitting, make a new stitch by placing the yarn over the right-hand needle (UK: yfwd, yon, yrn). In crochet, wind yarn around hook. (UK: yoh or yrh).

Chevron Pattern

(multiple of 19 sts plus 3)

Note: Chevron patt may be worked from text or chart.

Row 1 (RS) K1, *k1, yo, k2, SKP, yo, k2, SKP, k2, k2tog, k2, yo, k2tog, k2, yo; rep from * to last 2 sts, k2.

Row 2 and all WS rows Purl.

Row 3 K1, *k2, yo, k2, SKP, yo, k2, SKP, k2tog, k2, yo, k2tog, k2, yo, k1; rep from * to last 2 sts, k2.

Row 5 K1, *k3, yo, k2, SKP, k6, k2tog, k2, yo, k2; rep from * to last 2 sts, k2.

Row 7 K1, *k4, yo, k2, SKP, k4, k2tog, k2, yo, k4; rep from * to last 2 sts, k2.

Row 8 Purl.

Rep rows 1–8 for chevron pattern.

Back

With smaller needles, cast on 136 sts.

Knit 6 rows.

Change to larger needles.

Work in chevron patt until piece measures approx 12¼ in/31 cm from beg.

Place a clip-on st marker at each end of last row worked to indicate the beg of the armhole.

Cont in chevron patt for 6½ in/16.5cm more.

Shoulder shaping

Bind off 5 sts at beg of next 6 rows, bind off 4 sts at beg of next 8 rows.

Place marker to mark the center 44 sts on the last WS row.

Neck shaping

Row 1 (RS) Bind off 4 sts, work to center marked sts, join a 2nd ball of yarn and bind off center 44 sts, work to end.

Row 2 (WS) Bind off 4 sts, work to end of first side; on 2nd side, bind off 2 sts, work to end.

Row 3 (RS) Rep row 2.

Row 4 (WS) Bind off 4 sts, work to last 2 sts of first side, p2tog; on 2nd side, p2tog, work to end.

Then bind off rem 4 sts on first side, work 2nd side, turn and bind off rem 4 sts on 2nd side.

Front

Work same as back up to the shoulder shaping. Place markers on the last WS row to mark the center 20 sts.

27 Jacintha



Shoulder and neck shaping

Next row (RS) Bind off 5 sts, work to center marked sts, sl the center 20 sts to a st holder, join a 2nd ball of yarn, bind off 2 sts and work to end.

Next row (WS) Bind off 5 sts, work to end of first side; on 2nd side, bind off 2 sts, work to end.

Cont to shape shoulders, binding off 5 sts from each shoulder edge twice more, 4 sts 7 times, AT SAME TIME, bind off 2 sts from each neck edge 6 times more then 1 st each side once.

Finishing

Sew right shoulder seam.

Neckband

With RS facing and smaller needles, pick up and k 20 sts from shaped front neck edge, k 20 sts from st holder, pick up and k 20 sts from shaped front neck edge, pick up and k 52 sts from back neck edge—112 sts.

Knit 7 rows.

Bind off knitwise.

Sew left shoulder and neckband seam.

Armhole trims

With RS facing and smaller needles, pick up and k 58 sts between markers on one armhole edge.

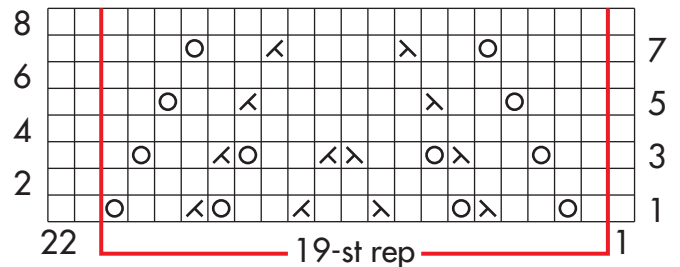
Knit 6 rows.

Bind off knitwise.

Work same way along second armhole edge.

Sew side seams. ■

Chevron Pattern



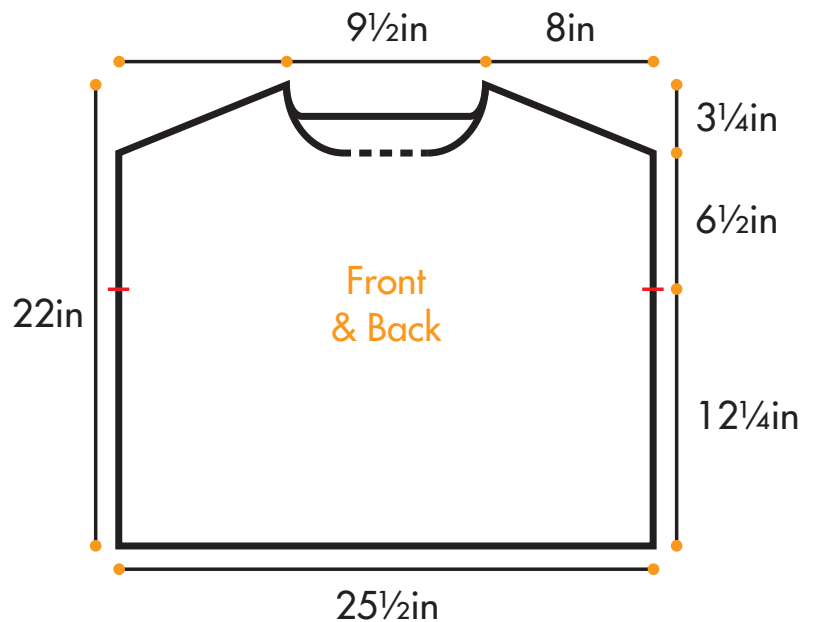
Stitch Key

□ k on RS, p on WS

⊙ yo

↘ k2tog

⊗ SKP



-- = Stitches on hold

- = Place markers