



NORO

MAGAZINE

Xylica





Sizes

Sized for X-Small/Small (Medium/Large, 1X/2X).

Finished Measurements

- Bust (with fronts overlapped) approx 50 (56, 62)in/127 (142, 158)cm.
- Length 29 (31, 31)in/73.5 (78.5, 78.5)cm.

Materials

- 7 (8, 9) x 100g hanks of Noro *Madara* in #06.
- One pair size US 8/5mm needles, or size to obtain gauge.
- Stitch markers.

Gauges

- 16 sts and 24 rows = 4in/10cm over seed st using size US 8/5mm needles.
- 48 sts = approx 10in/25.5cm over leaf lace panel using size US 8/5mm needles.

TAKE TIME TO CHECK GAUGES.

General and Knitting Abbreviations

approx approximately; **beg** begin(ning); **CC** contrasting color; **cm** centimeter(s); **cn** cable needle; **cont** continue(ing); **dec** decrease(ing); **dpn** double-pointed needle(s); **est** established; **fol** follow(s) (ing); **g** gram(s); **in** inch(es); **inc** increase(ing); **k** knit; **kfb** knit into front and back of stitch; **LH** left-hand; **mm** millimeter(s); **MC** main color; **M1** make one (see glossary); **p** purl; **patt(s)** pattern(s); **pm** place marker; **psso** pass slip stitch(es) over; **rem** remain(s) (ing); **rep** repeat; **rev** reverse(ing) (ed); **RH** right-hand; **rnd(s)** round(s); **RS** right side; **SKP** slip 1, knit 1, pass slip stitch over; **SK2P** slip 1, knit 2 stitches together, pass slip stitch over k2tog; **S2KP** slip 2 stitches together knitwise, knit 1, pass slip stitches over knit 1; **sl** slip; **sm** slip marker; **ssk/ssp** slip, slip, knit/purl (see glossary); **st(s)** stitch(es); **St st** Stockinette stitch; **tbl** through back loop; **tog** together; **WS** wrong side(s); **wyib** with yarn in back; **wyif** with yarn in front; **yo** yarn over (hook or needle); * repeat directions following * as many times as indicated; [] repeat directions inside brackets as many times as indicated.

Glossary

bind off To finish off an edge and keep stitches from unraveling by lifting the first stitch over the second, the second over the third, etc. (UK: cast off).

cast on Form a foundation row by making specified number of loops on the knitting needle.

decrease Reduce the number of stitches in a row (i.e., knit 2 together; purl 2 together).

increase Add to the number of stitches in a row (i.e., knit in front and back of stitch).

knitwise Insert the needle into the stitch as if you were going to knit it.

make one Insert tip of LH needle from front to back under the strand between the last stitch worked and the next stitch on the needle. Knit into the back loop to increase one stitch.

make one purl stitch With the needle tip, lift the strand between the last stitch worked and the next stitch on left-hand needle and purl it. One purl stitch has been added.

no stitch On some charts, “no stitch” is indicated with shaded spaces where stitches have been decreased or not yet made. In such cases, work the stitches of the chart, skipping over the “no stitch” spaces.

place markers Loop a piece of contrasting yarn or a purchased stitch marker onto the needle.

pick up and knit/purl Knit (or purl) into the loops along an edge.

purlwise Insert the needle into the stitch as if you were going to purl it.

selvage stitch Edge stitch that helps make seaming easier.

skip Skip specified number of stitches of the previous row and work into next stitch (UK: miss).

slip, slip, knit/purl Slip next two sts knitwise (purlwise), one at a time, to right-hand needle. Insert tip of left-hand needle into fronts of these sts from left to right and knit/purl them together to decrease one stitch.

slip stitch In knitting, pass a stitch from the left-hand to the right-hand needle as if to purl without working it. In crochet, insert hook through loop or edge, yarn over and pull through loop on hook (UK: ss or sc).

work even Continue in specified pattern without increasing or decreasing (UK: work straight).

yarn over In knitting, make a new stitch by placing the yarn over the right-hand needle (UK: yfwd, yon, yrn). In crochet, wind yarn around hook. (UK: yoh or yrh).

Seed Stitch

(an even number of sts)

Row 1 (RS) *K1, p1; rep from * to end.

Row 2 *P1, k1; rep from * to end.

Rep rows 1 and 2 rows for seed st.

Leaf Lace Panel

(over 48 sts)

Note: Leaf lace panel may be worked from text or chart.

Row 1 (RS) K1 (selvage st), [k8, k2tog, yo, k1, p1, k1, yo, ssk, k8] twice, sl 1 wyif (selvage st).

Row 2 (WS) P1 (selvage st), [p7, p2tog tbl, p2, yo, k1, yo, p2, p2tog, p7] twice, sl 1 wyif (selvage st).

Row 3 K1, [k6, k2tog, k1, yo, k2, p1, k2, yo, k1, ssk, k6] twice, sl 1 wyif.

Row 4 P1, [p5, p2tog tbl, p3, yo, p1, k1, p1, yo, p3, p2tog, p5] twice, sl 1 wyif.

Row 5 K1, [k4, k2 tog, k2, yo, k3, p1, k3, yo, k2, ssk, k4] twice, sl 1 wyif.

Row 6 P1, [p3, p2tog tbl, p4, yo, p2, k1, p2, yo, p4, p2tog, p3] twice, sl 1 wyif.

Row 7 K1, [k2, k2tog, k3, yo, k4, p1, k4, yo, k3, ssk, k2] twice, sl 1 wyif.

Row 8 P1, [p1, p2tog tbl, p5, yo, p3, k1, p3, yo, p5, p2tog, p1] twice, sl 1 wyif.

Row 9 K1, [k2tog, k4, yo, k5, p1, k5, yo, k4, ssk] twice, sl 1 wyif.

Row 10 P1, [p11, k1, p11] twice, sl 1 wyif.

Row 11 K1, [k11, p1, k11] twice, sl 1 wyif.

Row 12 Rep row 10.

Rep rows 1–12 for leaf lace patt.

Back

Cast on 108 (120, 132) sts.

Row 1 (RS) Work 40 (46, 52) sts in seed st, pm, work 5 sts in St st, pm, work next 18 sts in seed st, pm, work 5 sts in St st, pm, work 40 (46, 52) sts in seed st to end of row.

Cont in patts as established until piece measures 1 ¼in/3.5cm from beg, removing markers on last WS row.

Begin patterns

Next row (RS) Work 30 (36, 42) sts in seed st, pm, work row 1 of leaf lace panel over 48 sts, pm, work 30 (36, 42) sts in seed st to end of row.

Next rows (WS) Work 36 sts in seed st, sm, work row 2 of leaf lace panel over 48 sts, sm, work 36 sts in seed st to end.



Cont in patts as established, keeping first and last 36 sts in seed st and center 48 sts in leaf lace panel, until piece measures approx 29 (31, 31)in/73.5 (78.5, 78.5)cm from beg, end with a patt row 12.
Bind off all sts in patt.

Right Front

Cast on 62 (68, 74) sts.

Row 1 (RS) Work 17 sts in seed st, pm, work 5 sts in St st, pm, work 18 sts in seed st, pm, work 5 sts in St st, pm, work 17 (23, 29) sts in seed st to end.

Cont in patts as established until piece measures 1¼in/3.5cm from beg, removing markers on last WS row.

Begin patterns

Next row (RS) Work 7 sts in seed st (front collar border), pm, work row 1 of leaf lace panel over 48 sts, pm, work 7 (13, 19) sts in seed st to end of row.

Next row (WS) Work 7 (13, 19) sts in seed st, sm, work row 2 in leaf lace panel, sm, work 7 sts in seed st to end of row.

Cont in patts as established until piece measures 19 (21, 21)in/48 (53, 53)cm from beg, end with a WS row.

Next row (RS) Work 7 sts in seed st, M1 (knit or purl to keep to seed st), sm, cont patts to end of row.

Cont to inc 1 st at inside edge of collar sts (before marker) every 4th row until there are 15 sts for the collar, working inc sts into seed st—70 (76, 82) sts.

Work even in patts until piece measures same length as back, minus one row.

Next row (WS) Bind off 55 (61, 67) sts, patt to end—15 sts rem for collar.

Cont 15 collar sts in seed st for 2in/5cm, or until band fits along one-half back neck. Bind off in patt.

Left Front

Cast on 62 (68, 74) sts.

Row 1 (RS) Work 17 (23, 29) sts in seed st, pm, work 5 sts in St st, pm, work 18 sts in seed st, pm, work 5 sts in St st, pm, work 17 sts in seed st to end of row.

Cont in patts as established until piece measures 1¼in/3.5cm from beg, removing markers on last WS row.

Begin Leaf Lace Panel

Next row (RS) Work 7 (13, 19) sts in seed st, pm, work row 1 of lace leaf panel over 48 sts, pm, work 7 sts in seed st to end of row (front collar border).

Next row (WS) Work 7 sts in seed st, sm, work row 2 in lace leaf panel, sm, work 13 sts in seed st to end.

Cont in patts as established until piece measures 19 (21, 21)in/48 (53, 53)cm from beg, end with a WS row.

Next row (RS) Work patts to last 7 sts, sm, M1 (knit or purl to keep to seed st), work seed st to end of row.

Cont to inc 1 st at inside edge of collar sts (after marker) every 4th row until there are 15 sts for the collar, working inc sts into seed st—70 (76, 82) sts.

Work even in patts until piece measures same length as back, end with a WS row.

Next row (RS) 55 (61, 67) sts, patt to end—15 sts rem for collar. Cont 15 collar in seed st for 2in/5cm, or until band fits along one-half back neck. Bind off in patt.

Finishing

Block pieces lightly to measurements.

Sew shoulder seams leaving center 4in/10cm open for back neck. Pin sides of collar to back neck, easing in sts.

Sew bound-off edges tog for back collar seam, then sew sides to back neck.

Side Closures (make 2)

Cast on 15 sts.

Work in seed st for 3½in/9cm, bind off.

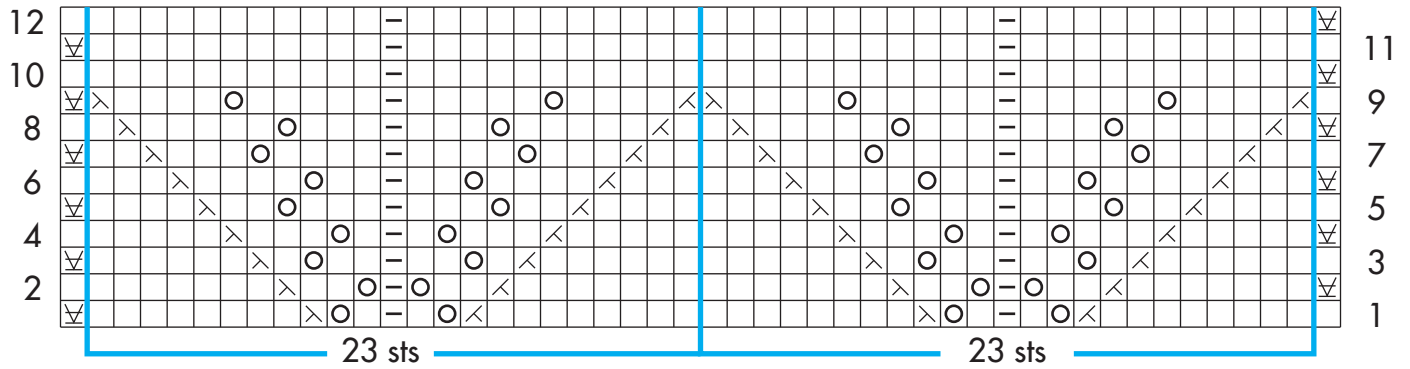
Place a marker 12in/30.5cm down from shoulder seams on back and fronts, another marker at 3¾in/9.5cm below first marker.

Sew cast-on and bound off edges of closure along back and fronts, approx 1½in/4cm in from edge. ■

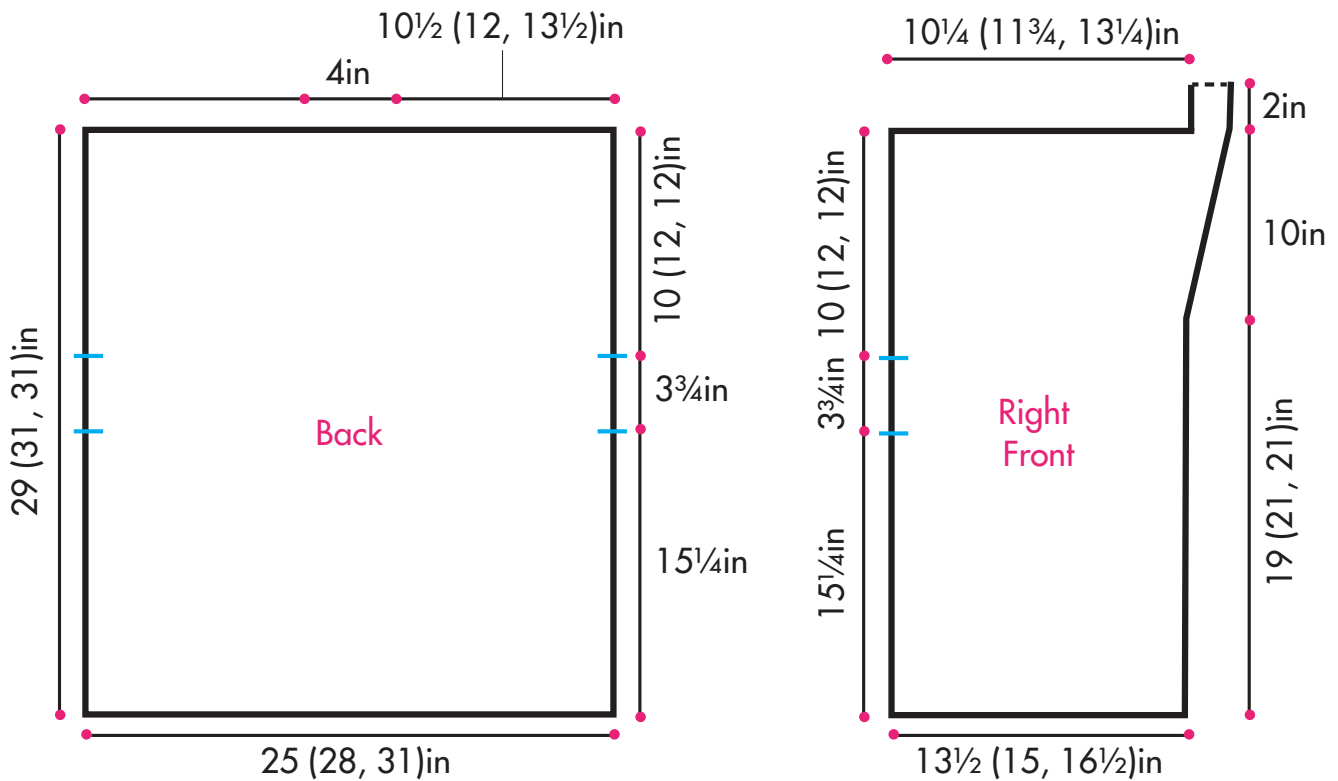




Leaf Lace Panel



- k on RS, p on WS ▽ slip 1 wyif ⊗ k2tog on RS, p2tog on WS
- ▢ p on RS, k on WS ○ yo ⊗ ssk on RS, p2tog tbl on WS



— = Place markers