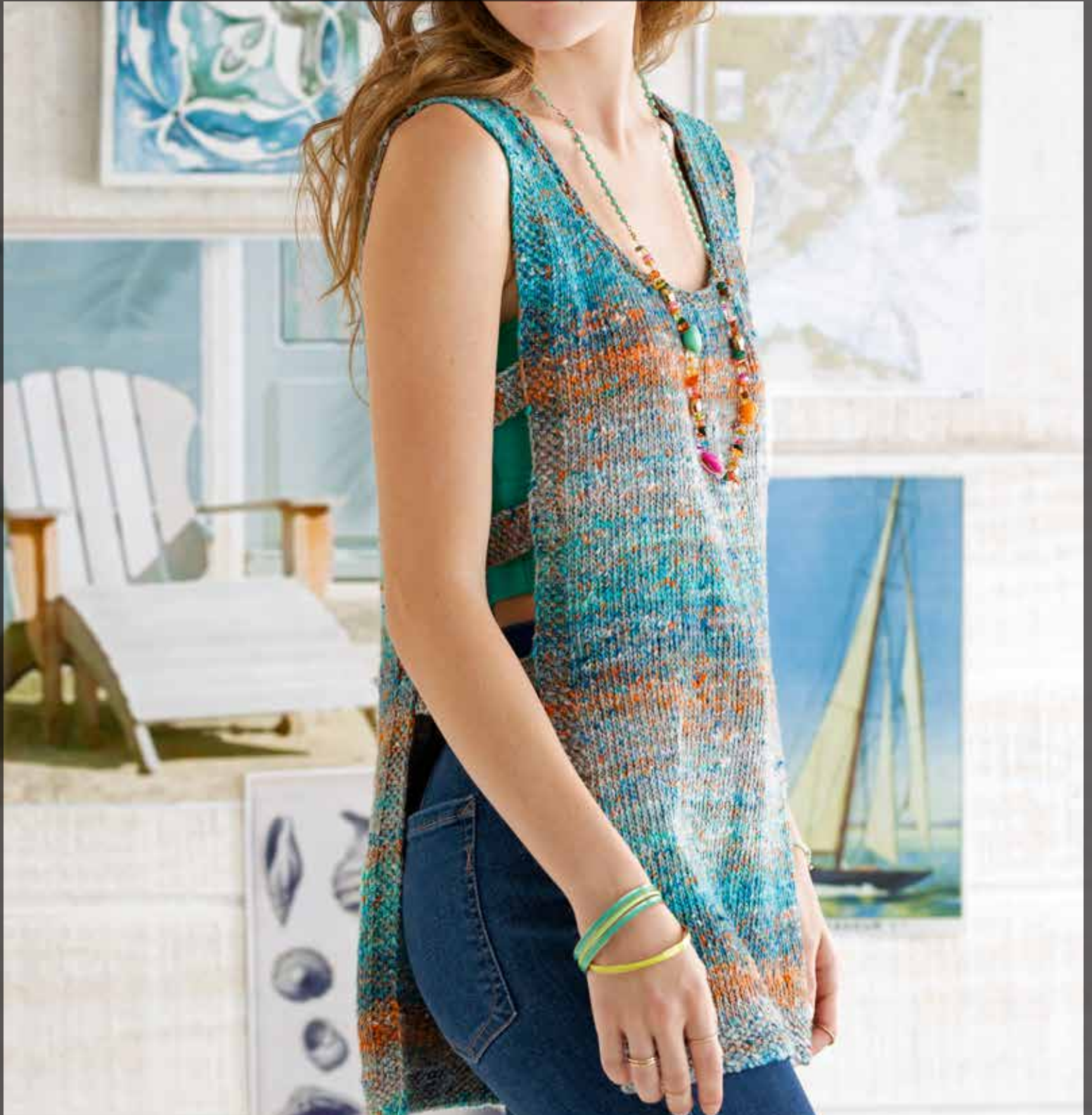




NORO

MAGAZINE

Abra





Sizes

Sized for X-Small/Small (Medium, Large, 1X/2X, 3X/4X Large) and shown in size X-Small/Small.

Finished Measurements

- Shoulder to shoulder width 14½ (16, 17, 18, 18¾)in/37 (40.5, 43, 45.5, 47.5)cm.
- Length 27¾ (27¾, 28¼, 28¼, 28¾)in/70.5 (70.5, 72, 72, 73)cm.

Materials

- 2 x 200g balls of Noro *Uchiwa* in #04.
- One pair size US 7/4.5mm needles.
- One pair size US 8/5mm needles, or size to obtain gauge.
- One size US 7/4.5mm circular needle, 16in/40cm long.
- Stitch markers.
- Stitch holders.

Gauge

19 sts and 27 rows = 4in/10cm over St st using size US 8/5mm needles.

TAKE TIME TO CHECK GAUGE.

General and Knitting Abbreviations

approx approximately; **beg** begin(ning); **CC** contrasting color; **cm** centimeter(s); **cn** cable needle; **cont** continue(ing); **dec** decrease(ing); **dpn** double-pointed needle(s); **est** established; **folll** follow(s) (ing); **g** gram(s); **in** inch(es); **inc** increase(ing); **k** knit; **kfb** knit into front and back of stitch; **LH** left-hand; **mm** millimeter(s); **MC** main color; **M1** make one (see glossary); **p** purl; **patt(s)** pattern(s); **pm** place marker; **psso** pass slip stitch(es) over; **rem** remain(s) (ing); **rep** repeat; **rev** reverse(ing) (ed); **RH** right-hand; **rnd(s)** round(s); **RS** right side; **SKP** slip 1, knit 1, pass slip stitch over; **SK2P** slip 1, knit 2 stitches together, pass slip stitch over k2tog; **S2KP** slip 2 stitches together knitwise, knit 1, pass slip stitches over knit 1; **sl** slip; **sm** slip marker; **ssk/ssp** slip, slip, knit/purl (see glossary); **st(s)** stitch(es); **St st** Stockinette stitch; **tbl** through back loop; **tog** together; **WS** wrong side(s); **wyib** with yarn in back; **wyif** with yarn in front; **yo** yarn over (hook or needle); * repeat directions following * as many times as indicated; [] repeat directions inside brackets as many times as indicated.

Glossary

bind off To finish off an edge and keep stitches from unraveling by lifting the first stitch over the second, the second over the third, etc. (UK: cast off).

bind off in ribbing Maintain the rib pattern as you bind off (knit the knit stitches; purl the purl stitches) (UK: cast off in ribbing)

cast on Form a foundation row by making specified number of loops on the knitting needle.

decrease Reduce the number of stitches in a row (i.e., knit 2 together; purl 2 together).

increase Add to the number of stitches in a row (i.e., knit in front and back of stitch).

knitwise Insert the needle into the stitch as if you were going to knit it.

make one Insert tip of LH needle from front to back under the strand between the last stitch worked and the next stitch on the needle. Knit into the back loop to increase one stitch.

make one purl stitch With the needle tip, lift the strand between the last stitch worked and the next stitch on left-hand needle and purl it. One purl stitch has been added.

no stitch On some charts, “no stitch” is indicated with shaded spaces where stitches have been decreased or not yet made. In such cases, work the stitches of the chart, skipping over the “no stitch” spaces.

place markers Loop a piece of contrasting yarn or a purchased stitch marker onto the needle.

pick up and knit/purl Knit (or purl) into the loops along an edge.

purlwise Insert the needle into the stitch as if you were going to purl it.

selvage stitch Edge stitch that helps make seaming easier.

skip Skip specified number of stitches of the previous row and work into next stitch (UK: miss).

slip, slip, knit/purl Slip next two sts knitwise (purlwise), one at a time, to right-hand needle. Insert tip of left-hand needle into fronts of these sts from left to right and knit/purl them together to decrease one stitch.

slip stitch In knitting, pass a stitch from the left-hand to the right-hand needle as if to purl without working it. In crochet, insert hook through loop or edge, yarn over and pull through loop on hook (UK: ss or sc).

work even Continue in specified pattern without increasing or decreasing (UK: work straight).

yarn over In knitting, make a new stitch by placing the yarn over the right-hand needle (UK: yfwd, yon, yrn). In crochet, wind yarn around hook. (UK: yoh or yrh).

Back

With size US 8/5mm needles, cast on 69 (77, 81, 85, 89) sts.

Row 1 (RS) Sl 1 wyif, *k1, p1; rep from * to last 2 sts, k2.

Rep row 1 for seed st for 9 rows more.

Begin main pattern

Row 1 (RS) Sl 1 wyif, [k1, p1] twice, knit to last 5 sts, [p1, k1] twice, k1.

Row 2 (WS) Sl 1 wyif, [k1, p1] twice, purl to last 5 sts, [p1, k1] twice, k1.

Work even in patt as established, keeping first and last 5 sts in seed st, until piece measures 27 (27, 27½, 27½, 28)in/68.5 (68.5, 70, 70, 71)cm from beg.

Mark center 33 (33, 35, 35, 35) sts.

Shoulder and neck shaping

Next row (RS) Bind off 4 (5, 6, 6, 7) sts, work to center marked sts, sl center 33 (33, 35, 35, 35) sts to st holder, join a 2nd ball of yarn and work to end.

Next row (WS) Bind off 4 (5, 6, 6, 7) sts, work to end on first side; on 2nd side, bind off 3 sts, work to end.

Next row (RS) Bind off 4 (6, 6, 7, 7) sts, work to end of first side; on 2nd side, bind off 3 sts, work to end.

Next row (WS) Bind off 4 (6, 6, 7, 7) sts, work to end of first side; on 2nd side, bind off 2 sts, work to end.

Next row (RS) Bind off rem 5 (6, 6, 7, 8) sts of first side; on 2nd side, bind off 2 sts, work to end.

Next row (WS) Bind off rem 5 (6, 6, 7, 8) sts of first side.

Front

Work same as back until piece measures 21 (21, 21½, 21½, 22)in/53.5 (53.5, 54.5, 54.5, 56)cm from beg.

Neck shaping

Next row (RS) Patt 24 (28, 29, 31, 33), sl center 21 (21, 23, 23, 23) sts to st holder, join a 2nd ball of yarn and patt rem 24 (28, 29, 31, 33) sts.

Working both sides at once, bind off 3 sts from each neck edge once, 2 sts once, then dec 1 st every RS row 6 times—13 (17, 18, 20, 22) sts each side.

Work even until piece measures same as back to shoulder.

02 Abra



Shoulder shaping

Bind off from each shoulder edge 4 (5, 6, 6, 7) sts 2 (1, 3, 1, 2) times, 5 (6, 0, 7, 8) sts 1 (2, 0, 2, 1) time.

Finishing

Block pieces to measurements.
Sew shoulder seams.

Neckband

With RS facing and circular needle, starting at right shoulder seam, pick up and k 140 (140, 144, 144, 144) sts evenly around neck edge, including sts on holders. Join and pm for beg of rnd.

Rnd 1 *K1, p1; rep from * around.

Rnd 2 *P1, k1; rep from * around.

Bind off all sts as rnd 1.

Side Tabs (make 6)

With size US 7/4.5mm needles, cast on 7 sts.

Row 1 (RS) Sl 1 wyif, [k1, p1] twice, k2.

Rep row 1 until tab measures 5in/12.5cm.

Bind off.

Measure down approx 8 (9, 10, 10½, 11)in/20 (23, 25.5, 26.5 28)cm from shoulder along each side edge.

Sew bound-off edges of first set of tabs to each side edge.

Sew remaining sets of tabs along side edges approx 2½in/6.5cm apart. ■

