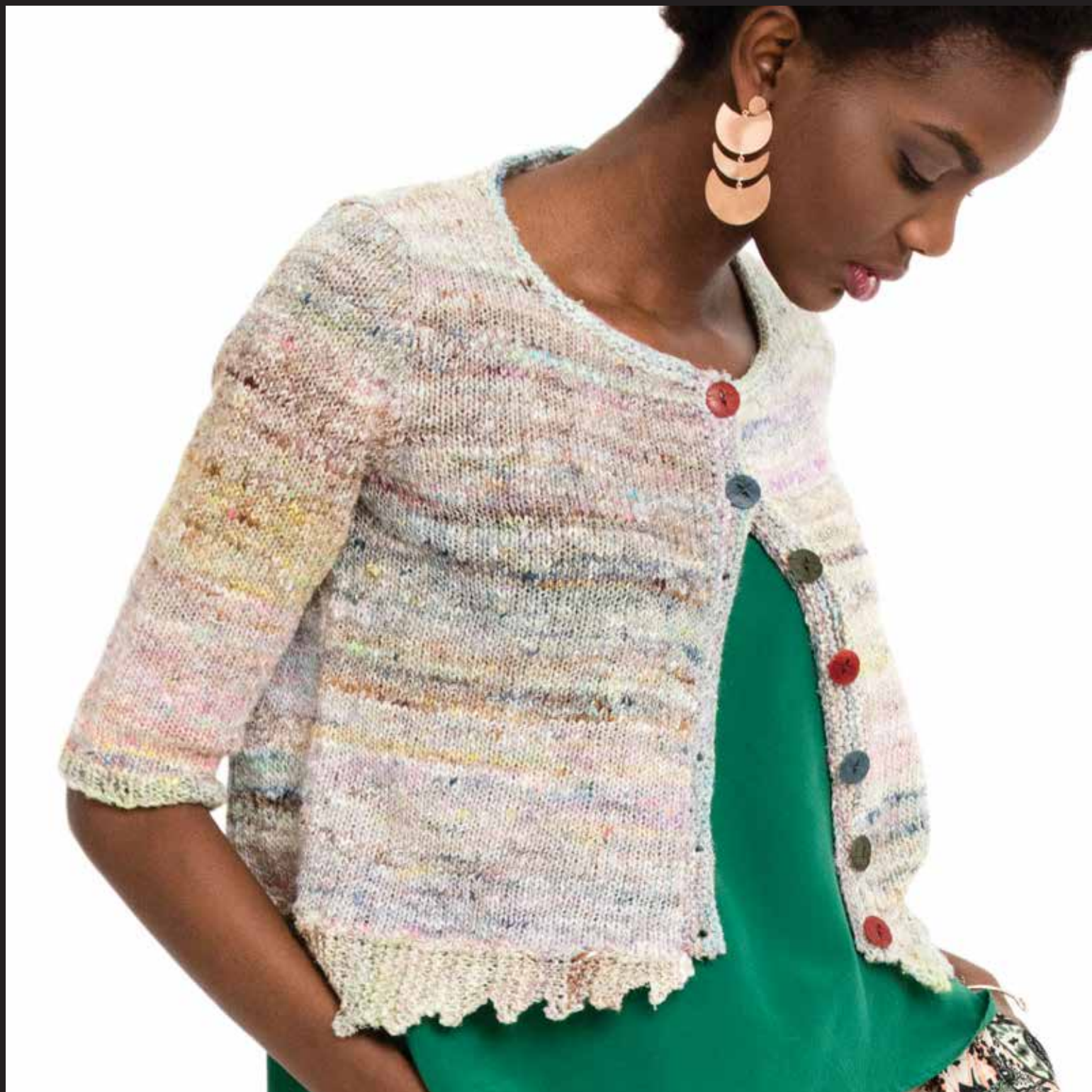




# NORO

MAGAZINE

Cropped Cardigan



# 18 Cropped Cardigan

●●○○ EASY



## Sizes

Sized for Small (Medium, Large, X-Large, XX-Large).

## Finished Measurements

- Bust: 36 (40, 44, 48, 52)in/91.5 (101.5, 111.5, 122, 132)cm.
- Length (excluding zig zag hem): 17 (18, 19, 20, 21)in/43 (45.5, 48, 51, 53.5)cm.
- Upper arm: 11¼ (12, 12¾, 14, 14¾)in/28.5 (30.5, 32.5, 35.5, 37.5)cm.

## Materials

- 3 (3, 4, 4, 5) x 50g skeins of Noro *Silk Garden Sock Solo* in #1.
- One pair size US 6/4mm needles, or size to obtain gauge.
- One size US 6/4mm circular needle, 16in/40cm long.
- Two size US 6/4mm double-pointed needles.
- Stitch holders.
- Stitch markers.
- 7 x ¾in/20mm buttons.

## Gauge

20 sts and 30 rows = 4in/10cm over Stockinette stitch using size US 6/4mm needles.

TAKE TIME TO CHECK GAUGE

## General & Knitting Abbreviations

**approx** approximately; **beg** begin(ning); **CC** contrasting color; **cm** centimeter(s), **cn** cable needle; **cont** continue(ing); **dec** decrease(ing); **dpn** double-pointed needle(s); **est** established; **fol** follow(s) (ing); **g** gram(s); **in** inch(es); **inc** increase(ing); **k** knit; **kfb** knit into front and back of stitch; **LH** left-hand; **mm** millimeter(s); **MC** main color; **M1** make one (see glossary); **p** purl; **patt(s)** pattern(s); **pm** place marker; **psso** pass slip stitch(es) over; **rem** remain(s) (ing); **rep** repeat; **rev** reverse(ing) (ed); **RH** right-hand; **rnd(s)** round(s); **RS** right side; **SKP** slip 1, knit 1, pass slip stitch over; **SK2P** slip 1, knit 2 stitches together, pass slip stitch over k2tog; **S2KP** slip 2 stitches together knitwise, knit 1, pass slip stitches over knit 1; **sl st** slip stitch; **sm** slip marker; **ssk/ssp** slip, slip, knit/purl (see glossary); **st(s)** stitch(es); **St st** Stockinette stitch; **tbl** through back loop; **tog** together; **WS** wrong side(s); **wyib** with yarn in back; **wyif** with yarn in front; **yo** yarn over (hook or needle); \* repeat directions following \* as many times as indicated; [ ] repeat directions inside brackets as many times as indicated.

## Crochet Abbreviations

**BP** back post; **BPdc** back post double crochet; **BPsc** back post single crochet; **BPtr** back post treble crochet; **ch** chain(s); **ch-** refers to chain or space previously made (i.e., ch-1 space); **ch-sp** chain space previously made; **dc** double crochet (UK: tr=treble); **dc2tog** double crochet 2 stitches together; **dtr** double treble (UK: trtr=triple treble); **FP** front post; **FPdc** front post double crochet; **FPsc** front post single crochet; **FPtr** front post treble crochet; **grp(s)** group(s); **hdc** half double crochet (UK: htr=half treble); **lp(s)** loop(s); **sc** single crochet (UK: dc=double crochet); **sc2tog** single crochet 2 stitches together; **sk** skip(ped); **sl st** slip stitch (UK: sc=single crochet); **sp(s)** space(s); **t-ch** turning chain; **tr** treble (UK: dtr=double treble); **trtr** triple treble (UK: qtr=quadruple treble).

## Glossary

**bind off** To finish off an edge and keep stitches from unraveling by lifting the first stitch over the second, the second over the third, etc. (UK: cast off).

**bind off in ribbing** Maintain the rib pattern as you bind off (knit the knit stitches; purl the purl stitches) (UK: cast off in ribbing)

**cast on** Form a foundation row by making specified number of loops on the knitting needle.

**decrease** Reduce the number of stitches in a row (i.e., knit 2 together; purl 2 together).

**increase** Add to the number of stitches in a row (i.e., knit in front and back of stitch).

**knitwise** Insert the needle into the stitch as if you were going to knit it.

**make one** Insert tip of LH needle from front to back under the strand between the last stitch worked and the next stitch on the needle. Knit into the back loop to increase one stitch.

**make one purl stitch** With the needle tip, lift the strand between the last stitch worked and the next stitch on left-hand needle and purl it. One purl stitch has been added.

**no stitch** On some charts, "no stitch" is indicated with shaded spaces where stitches have been decreased or not yet made. In such cases, work the stitches of the chart, skipping over the "no stitch" spaces.

**place markers** Loop a piece of contrasting yarn or a purchased stitch marker onto the needle.

**pick up and knit/purl** Knit (or purl) into the loops along an edge.

**purlwise** Insert the needle into the stitch as if you were going to purl it.

**selvage stitch** Edge stitch that helps make seaming easier.

**skip** Skip specified number of stitches of the previous row and work into next stitch (UK: miss).

**slip, slip, knit/purl** Slip next two sts knitwise (purlwise), one at a time, to right-hand needle. Insert tip of left-hand needle into fronts of these sts from left to right and knit/purl them together to decrease one stitch.

**slip stitch** In knitting, pass a stitch from the left-hand to the right-hand needle as if to purl without working it. In crochet, insert hook through loop or edge, yarn over and pull through loop on hook (UK: ss or sc).

**work even** Continue in specified pattern without increasing or decreasing (UK: work straight).

**yarn over** In knitting, make a new stitch by placing the yarn over the right-hand needle (UK: yfwd, yon, yrn). In crochet, wind yarn around hook. (UK: yoh or yrh).

## Note

Zig zag hem is worked after cardigan is complete. Hem is joined to lower edge of cardigan as it is worked.

## Short Row Wrap & Turn (w&t)

on RS row (on WS row)

- 1) Wyib (wyif), sl next st purlwise.
- 2) Move yarn between the needles to the front (back).
- 3) Sl the same st back to LH needle. Turn work. One st is wrapped.
- 4) When working the wrapped st, insert RH needle under the wrap and work it tog with the corresponding st on needle.

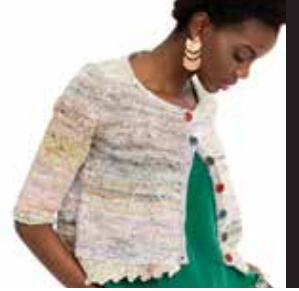
## 3-Needle Bind-Off

- 1) Hold right sides of pieces together on two needles. Insert third needle knitwise into first st of each needle, and wrap yarn knitwise.
- 2) Knit these two sts together, and slip them off the needles.  
\*Knit the next two sts together in the same manner.
- 3) Slip first st on 3rd needle over 2nd st and off needle.  
Rep from \* in step 2 across row until all sts are bound off.

## Back

Cast on 90 (100, 110, 120, 130) sts. Work in St st until piece measures 9 (9½, 10, 10½, 11)in/23 (24, 25.5, 26.5, 28) cm from beg, end with a WS row.

# 18 Cropped Cardigan



## Shape armhole

Bind off 6 (8, 10, 12, 14) sts at beg of next 2 rows.

Dec 1 st each side on next row, then every other row 5 (7, 9, 11, 13) times more—66 (68, 70, 72, 74) sts. Work even in St st until armhole measures 7 (7½, 8, 8½, 9)in/18 (19, 20.5, 21.5, 23)cm, end with a WS row.

## Shape shoulders

**Short row 1 (RS)** K to last 5 (5, 5, 6, 6) sts, w&t.

**Short row 2** P to last 5 (5, 5, 6, 6) sts, w&t.

**Short row 3** K to last 10 (10, 10, 12, 12) sts, w&t.

**Short row 4** P to last 10 (10, 10, 12, 12) sts, w&t.

**Short row 5** K to last 15 (16, 17, 18, 19) sts, w&t.

**Short row 6** P to last 15 (16, 17, 18, 19) sts, w&t.

**Next row** Knit to end, picking up wraps.

**Next row** Purl to end, picking up wraps.

Place first 15 (16, 17, 18, 19) sts on st holder for shoulder, place center 36 sts on 2nd st holder for back neck and rem 15 (16, 17, 18, 19) sts on 3rd st holder for shoulder.

## Left Front

Cast on 45 (50, 55, 60, 65) sts. Work in St st until piece measures 9 (9½, 10, 10½, 11)in/23 (24, 25.5, 26.5, 28)cm from beg, end with a WS row.

## Shape armhole

Bind off 6 (8, 10, 12, 14) sts at armhole edge (beg of RS rows). Work 1 WS row. Dec 1 st at armhole edge on next row, then every other row 5 (7, 9, 11, 13) times more—33 (34, 35, 36, 37) sts. Work even until armhole measures 4 (4½, 5, 5½, 6)in/10 (11.5, 12.5, 14, 15)cm, end with a RS row.

## Shape neck

Bind off 6 sts at neck edge (beg of WS rows) once, then 3 sts 4 times—15 (16, 17, 18, 19) sts. Work even until armhole measures same as back to shoulder, end with a WS row.

## Shape shoulder

**Row 1** Knit.

**Short row 2** P to last 5 (5, 5, 6, 6) sts, w&t.

**Row 3** Knit to end.

**Short row 4** P to last 10 (10, 10, 12, 12) sts, w&t.

**Row 5** Knit to end.

**Row 6** Purl to end, picking up wraps.

Place sts on st holder.

## Right Front

Cast on 45 (50, 55, 60, 65) sts. Work in St st until piece measures 9 (9½, 10, 10½, 11)in/23 (24, 25.5, 26.5, 28)cm from beg, end with a RS row.

## Shape armhole

Bind off 6 (8, 10, 12, 14) sts at armhole edge (beg of WS rows).

Dec 1 st at armhole edge on next row, then every other row 5 (7, 9, 11, 13) times more—33 (34, 35, 36, 37) sts.

Work even until armhole measures 4 (4½, 5, 5½, 6)in/10 (11.5, 12.5, 14, 15)cm, end with a WS row.

## Shape neck

Bind off 6 sts at neck edge (beg of RS rows) once, then 3 sts 4 times—15 (16, 17, 18, 19) sts. Work even until armhole measures same as back to shoulder, end with a WS row.

## Shape shoulder

**Short row 1** K to last 5 (5, 5, 6, 6) sts, w&t.

**Row 2** Purl to end.

**Short row 3** K to last 10 (10, 10, 12, 12) sts, w&t.

**Row 4** Purl to end.

**Row 5** Knit to end, picking up wraps.

**Row 6** Purl.

Place sts on st holder.

## Sleeves

Cast on 45 (47, 49, 51, 53) sts.

**Row 1 (RS)** K1, \*p1, k1; rep from \* to end.

Cont in k1, p1 rib as est for 3 rows more.

**Next row** Knit, inc 1 st—46 (48, 50, 52, 54) sts.

Cont in St st, inc 1 st each side every 10th (10th, 8th, 6th, 6th) row 5 (6, 7, 9, 10) times—56 (60, 64, 70, 74) sts. Work even until piece measures 9 (9½, 10, 10½, 11)in/23 (24, 25.5, 26.5, 28)cm from beg, end with a WS row.

## Shape cap

Bind off 6 (8, 10, 12, 14) sts at beg of next 2 rows.

Work 8 (12, 16, 16, 20) rows even. Dec 1 st each side of next row, then every other row 13 (13, 13, 14, 14) times more—16 sts.

Work 1 WS row. Bind off.

## Finishing

Join shoulders using 3-needle bind off, leaving 36 back neck sts on st holder. Set in sleeves. Sew side and sleeve seams.

## Neckband

With RS facing and circular needle, beg at right front neck edge, pick up and k 31 (33, 37, 39, 43) sts along right front neck edge to shoulder, k36 sts from back neck holder, pick up and k 31 (33, 37, 39, 43) sts along left front neck edge—98 (102, 110, 114, 122) sts. Knit 3 rows. Bind off.

## Button band

With RS facing and circular needle, beg at neck edge, pick up and k 66 (71, 76, 81, 86) sts evenly along left front edge. Knit 7 rows. Bind off.

Mark placement for 7 buttons, with first and last approx ½in/1.5cm from neck and lower edges, and the rem 5 spaced evenly between.

# 18 Cropped Cardigan



## Buttonhole band

With RS facing and circular needle, beg at lower edge, pick up and k 66 (71, 76, 81, 86) sts evenly along right front edge. Knit 3 rows.

**Next row (RS)** Knit, working buttonholes (yo, k2tog) to correspond to markers.

Knit 3 rows. Bind off.

Sew buttons to button band to correspond to buttonholes.

## Zig Zag Hem

**Note** Hem is worked perpendicular and joined to picked-up sts along lower edge, beg at left front and working around to right front. Pick up approx 4 sts for every 5 sts along edge, adjusting as needed to match zig zags at side edges. Place a marker along lower edge at center back. With dpn, cast on 3 sts.

**Row 1 (RS)** K2, pick up 1 st from left front lower edge, work ssk over last st on needle and picked up st (ssk join).

**Row 2 and all WS rows** Knit.

**Row 3** Cast on 1 st, k to last st, ssk join.

**Rows 5 and 7** Rep row 3.

**Row 9** Bind off 2 sts, k to last st, ssk join.

**Rows 11, 13, 15 and 17** Cast on 1 st, k to last st, ssk join.

**Row 19** Bind off 2 sts, k to last st, ssk join.

**Row 20** Knit.

Rep rows 11–20 to side seam, adjusting pick up rate as necessary to end with a row 20 at seam (note that each subsequent zig zag will have an additional st).

**Rows 21, 23, 25 and 27** K2tog, k to last st, ssk join.

**Row 29** Cast on 2 sts, k to last st, ssk join.

**Row 30** Knit.

Rep rows 21–30 to center back marker, adjusting pick up rate as necessary to end with a row 30 at marker (note that each subsequent zig zag will have 1 less stitch).

Rep rows 11–20 to side seam, then rep rows 21–30 to right front lower edge, ending with a row 28 to mirror left front edge. Bind off. Lightly block edging. ■

