



NORO

MAGAZINE

Cable Embellished Top



20 Cable Embellished Top

●●●○ INTERMEDIATE



Sizes

Sized for Small (Medium, Large).

Finished Measurements

- Bust 44 (48, 52)in/111.5 (122, 132)cm.
- Length 26 (26½, 27)in/66 (67, 68.5)cm.

Materials

- 7 (8, 9) x 50g skeins of Noro *Silk Garden Solo* in #2.
- One pair size US 7/4.5mm needles OR SIZE TO OBTAIN GAUGE.
- Cable needle.
- Clip-on st markers.

Gauge

14 sts and 20 rows = 4in/10cm over Stockinette stitch using size US 7/4.5mm needles.

TAKE TIME TO CHECK GAUGE

Knitting Abbreviations

approx approximately; **beg** begin(ning); **CC** contrasting color; **cm** centimeter(s); **cn** cable needle; **cont** continue(ing); **dec** decrease(ing); **dpn** double-pointed needle(s); **est** established; **fol** follow(s)(ing); **g** gram(s); **inc** increase(ing); **k** knit; **kfb** knit into front and back of stitch; **LH** left-hand; **mm** millimeter(s); **MC** main color; **M1** make one (see glossary); **p** purl; **patt(s)** pattern(s); **pm** place marker; **psso** pass slip stitch(es) over; **rem** remain(s)(ing); **rep** repeat; **rev** reverse(ing)(ed); **RH** right-hand; **rnd(s)** round(s); **RS** right side; **SKP** slip 1, knit 1, pass slip stitch over; **SK2P** slip 1, knit 2 stitches together, pass slip stitch over k2tog; **S2KP** slip 2 stitches together knitwise, knit 1, pass slip stitches over knit 1; **sl st** slip stitch; **ssk/ssp** slip, slip, knit/purl (see glossary); **st(s)** stitch(es); **St st** Stockinette stitch; **tbl** through back loop; **tog** together; **WS** wrong side(s); **wyib** with yarn in back; **wyif** with yarn in front; **yo** yarn over (hook or needle); * repeat directions following * as many times as indicated; [] repeat directions inside brackets as many times as indicated.

Crochet Abbreviations

BP back post; **BPdc** back post double crochet; **BPsc** back post single crochet; **BPtr** back post treble crochet; **ch** chain(s); **ch-** refers to chain or space previously made (i.e., ch-1 space); **ch-sp** chain space previously made; **dc** double crochet (UK: tr=treble); **dc2tog** double crochet 2 stitches together; **dtr** double treble (UK: trtr=triple treble); **FP** front post; **FPdc** front post double crochet; **FPsc** front post single crochet; **FPtr** front post treble crochet; **grp(s)** group(s); **hdc** half double crochet (UK: htr=half treble); **lp(s)** loop(s); **sc** single crochet (UK: dc=double crochet); **sc2tog** single crochet 2 stitches together; **sk** skip(ped); **sl st** slip stitch (UK: sc=single crochet); **sp(s)** space(s); **t-ch** turning chain; **tr** treble (UK: dtr=double treble); **trtr** triple treble (UK: qtr=quadruple treble).

Glossary

bind off To finish off an edge and keep stitches from unraveling by lifting the first stitch over the second, the second over the third, etc. (UK: cast off).

bind off in ribbing Maintain the rib pattern as you bind off (knit the knit stitches; purl the purl stitches) (UK: cast off in ribbing).

cast on Form a foundation row by making specified number of loops on the knitting needle.

decrease Reduce the number of stitches in a row (i.e., knit 2 together; purl 2 together).

increase Add to the number of stitches in a row (i.e., knit in front and back of stitch).

knitwise Insert the needle into the stitch as if you were going to knit it.

make one Insert tip of LH needle from front to back under the strand between the last stitch worked and the next stitch on the needle. Knit into the back loop to increase one stitch.

make one purl stitch With the needle tip, lift the strand between the last stitch worked and the next stitch on left-hand needle and purl it. One purl stitch has been added.

no stitch On some charts, “no stitch” is indicated with shaded spaces where stitches have been decreased or not yet made. In such cases, work the stitches of the chart, skipping over the “no stitch” spaces.

place markers Loop a piece of contrasting yarn or a purchased stitch marker onto the needle.

pick up and knit/purl Knit (or purl) into the loops along an edge.

purlwise Insert the needle into the stitch as if you were going to purl it.

selvage stitch Edge stitch that helps make seaming easier.

skip Skip specified number of stitches of the previous row and work into next stitch (UK: miss).

slip, slip, knit/purl Slip next two sts knitwise (purlwise), one at a time, to right-hand needle. Insert tip of left-hand needle into fronts of these sts from left to right and knit/purl them together to decrease one stitch.

slip stitch In knitting, pass a stitch from the left-hand to the right-hand needle as if to purl without working it. In crochet, insert hook through loop or edge, yarn over and pull through loop on hook (UK: ss or sc).

work even Continue in specified pattern without increasing or decreasing (UK: work straight).

yarn over In knitting, make a new stitch by placing the yarn over the right-hand needle (UK: yfwd, yon, yrn). In crochet, wind yarn around hook. (UK: yoh or yrh).

Stitches/Techniques Used

Tubular Cast-On (if final amount is an even number of sts)

- 1) With a contrasting yarn, cast on half the required stitches, plus one extra using a backwards loop cast on (for example, if the final cast-on is 100, cast on 50+1 = 51 sts.) Cut the yarn.
- 2) Join the main yarn and work as follows: K1, * bring yarn to front, k1 (creating a yo around the needle); rep from * to last st, do not bring yarn to front, end k1.
- 3) K1, *k1, bring yarn to front, slip next stitch purlwise, bring yarn to back; rep from * to last st, k1.
- 4) On next row, bring yarn to front, * slip one, bring yarn to back, k1, bring yarn to front; rep from * to last stitch, k1.

Continue in designated pattern. After a few rows in pattern, remove contrast yarn.

Tubular Cast-on (if final amount is an odd number of sts)

- 1) With a contrasting yarn, cast on half the required stitches, plus one extra using a backwards loop cast on (for example, if the final cast-on is 99, cast on 49+1 = 50 sts.) Cut the yarn.
- 2) Join the main yarn and work as follows: K1, * bring yarn to front, k1 (creating a yo around the needle); rep from * to end.
- 3) *K1, bring yarn to front, slip next stitch purlwise, bring yarn to back; rep from * to last st, k1.
- 4) On next row, bring yarn to front, * slip one, bring yarn to back, k1, bring yarn to front; rep from *, end slip last stitch.

Continue in designated pattern. After a few rows in pattern, remove contrast yarn.

Short Row Wrap & Turn (w&t)

On RS row (on WS row)

- 1) Wyib (wyif), sl next st purlwise.
- 2) Move yarn between the needles to the front (back).

20 Cable Embellished Top



3) Sl the same st back to LH needle. Turn work. One st is wrapped.

4) When working the wrapped st, insert RH needle under the wrap and work it tog with the corresponding st on needle.

M1K Insert needle into strand between last st worked and next st and k1tbl into this strand to M1K.

M2K Insert needle into strand between last st worked and next st and k1 into front and back of this strand to M2K.

3-st RPC Sl 1 st to cn and hold to back, k2, p1 from cn.

3-st LPC Sl next 2 sts to cn and hold to front, p1, k2 from cn.

4-st LC Sl 2 sts to cn and hold to front, k2, k2 from cn.

4-st RPC Sl next 2 sts to cn and hold to back, k2, p2 from cn.

4-st LPC Sl next 2 sts to cn and hold to front, p2, k2 from cn.

5-st RPC Sl next 3 sts to cn and hold to back, k2, p3 from cn.

5-st LPC Sl next 2 sts to cn and hold to front, p3, k2 from cn.

Note

Tubular cast on is optional.

Back

Cast on 85 (92, 99) sts.

Work in k1, p1 rib for 4 rows.

Purl 1 row, knit 1 row.

Begin chart pattern

Row 1 (RS) P7, M2K, [p1, M2K, p6, M2K] 10 (11, 12) times, p1, M2K, p7—129 (140, 151) sts.

Row 2 K7, p2, k1, [p2, k6, p2, k1] 10 (11, 12) times, p2, k7. Cont to foll chart in this way through row 18. There are 85 (92, 99) sts.

Begin short row shaping—first side

Short row 1 (RS) K6, w&t; purl to end.

Short row 2 K12 closing up wrap, w&t; purl to end.

Short row 3 K17, closing up wrap, w&t; purl to end.

Short row 4 K22, closing up wrap, w&t; purl to end.

Next row (RS) K to end of entire row closing up wrap.

Second side

Short row 1 (WS) P6, w&t; knit to end.

Short row 2 P12, closing up wrap, w&t; knit to end.

Short row 3 P17, closing up wrap, w&t; knit to end.

Short row 4 P22, closing up wrap, w&t; knit to end.

Next row P to end of entire row closing up wrap.

Next row K to end of entire row, closing up wraps.

Then, cont in St st on all sts for 12 rows.

Dec row (RS) K2, k2tog, k to last 4 sts, SKP, k2.

Rep dec row every 12th row 3 times more—77 (84, 91) sts.

Work even until piece measures 17½in/44.5cm from beg, measured at side edge.

Place markers each side of last row.

Begin armholes

Next inc row (RS) K1, M1K, k to last st, M1K, k1.

Rep this inc row every 14th row once more—81 (88, 95) sts. Work even until armhole edge measures 6½ (7, 7½)in/16.5 (18, 19)cm from markers.

Shape shoulder

Bind off 4 (5, 6) sts at beg of next 6 rows, 3 sts at beg of next 2 rows. On the last WS row, pm to mark the center 27 (28, 29) sts.

Shape neck

Next row (RS) Bind off 3 sts, k to the marked sts, join a 2nd ball of yarn and bind off center 27 (28, 29) sts, k to end.

Working both sides at once, cont to shape neck binding off 2 sts from each neck edge once then 1 st once, AT THE SAME TIME, bind off 3 sts from shoulder edge on next WS row, then bind off 3 sts from each shoulder edge twice more.

Front

Work same as back until armhole measures 5¼ (5¾, 6¼)in/13.5 (14.5, 16)cm.

Shape neck

Next row (RS) K33 (36, 39), join a 2nd ball of yarn and bind off center 15 (16, 17) sts, k to end.

Cont to shape neck binding off 3 sts from each neck edge once, 2 sts once, then dec 1 st each side every row on the next 4 rows, AT THE SAME TIME, when armhole edge measures same as back, shape shoulders by binding off 4 (5, 6) sts from each armhole edge 3 times, then 3 sts 4 times.

Finishing

Sew right shoulder seam.

Neckband

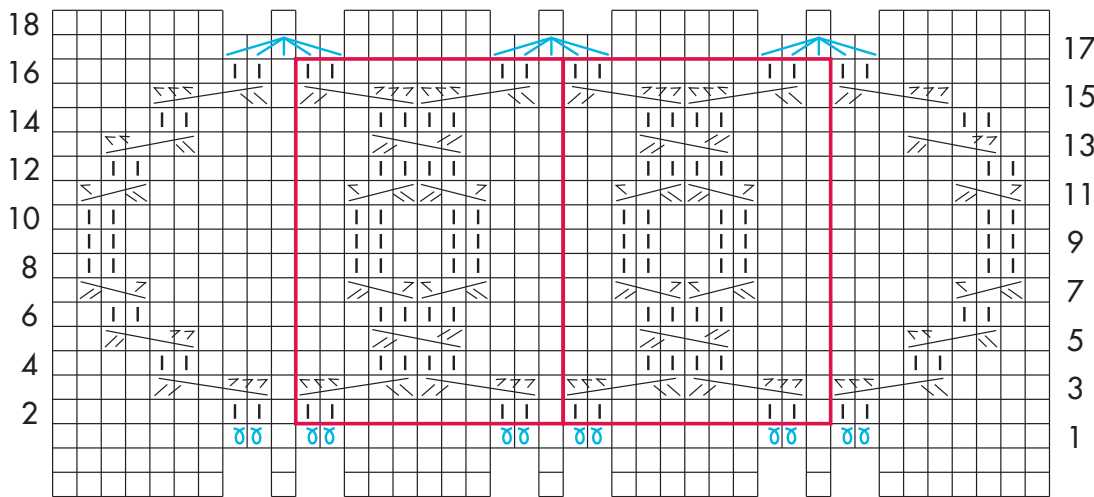
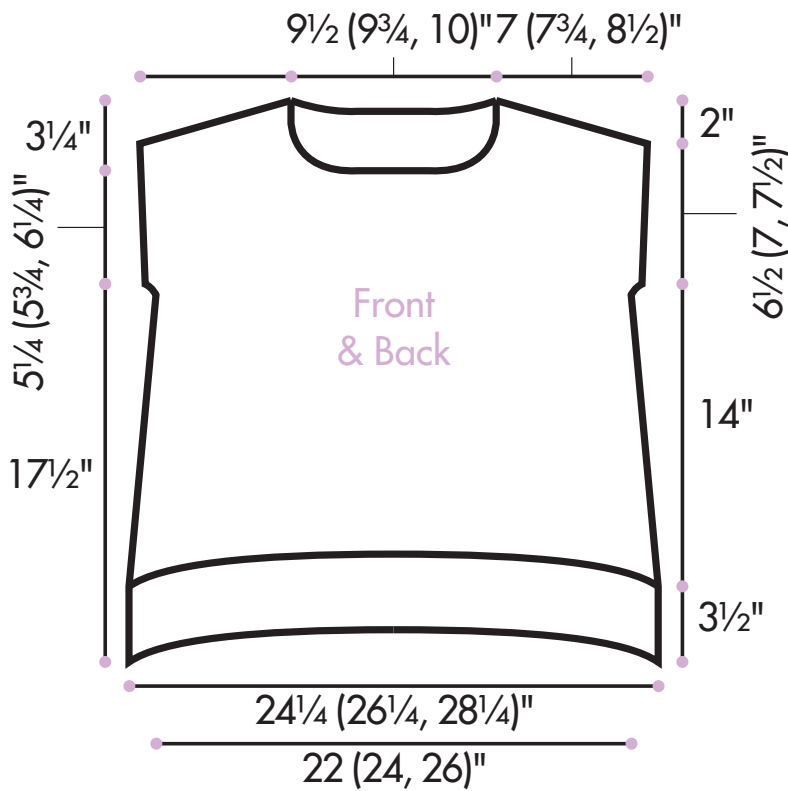
With RS facing, pick up and k 16 sts from shaped left front neck edge, 15 (16, 17) sts from center front neck, 16 sts from shaped right front neck edge, 35 (36, 37) sts from back neck edge—82 (84, 86) sts.

Work in k1, p1 rib for 4 rows. Bind off. Sew other shoulder and neck band seam.

Armhole trims

With RS facing, pick up and k 54 (56, 60) sts around armhole edge. Work in k1, p1 rib for 4 rows. Bind off. Sew side seams. Block finished piece to measurements. ■

20 Cable Embellished Top



Stitch Key

- k on RS, p on WS
- p on RS, k on WS
- M2K
- 3-st RPC
- 3-st LPC
- 4-st LC
- 4-st RPC
- 4-st LPC
- 5-st RPC
- 5-st LPC
- p5tog
- repeat

